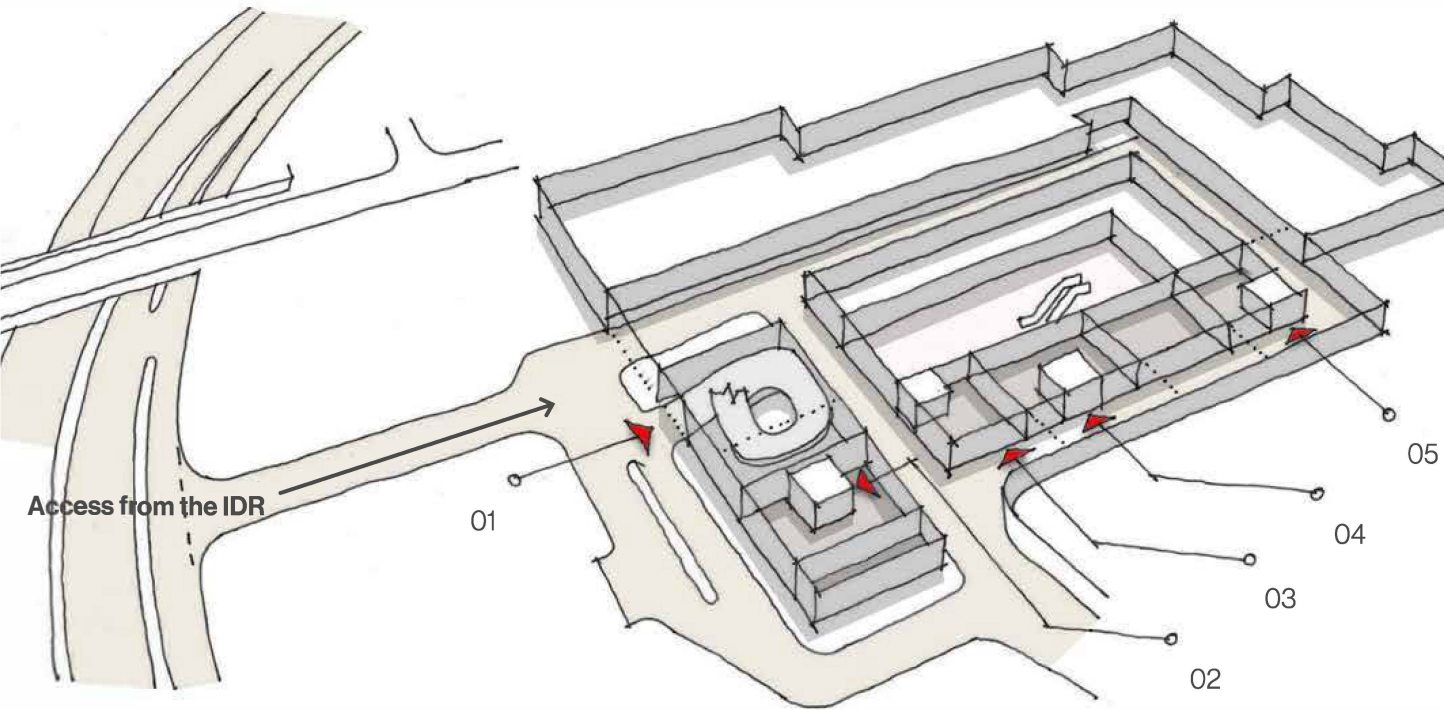
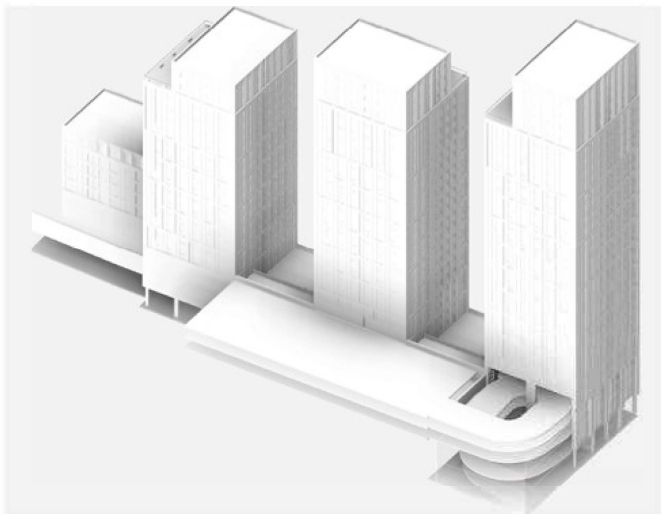


Scheme Proposals

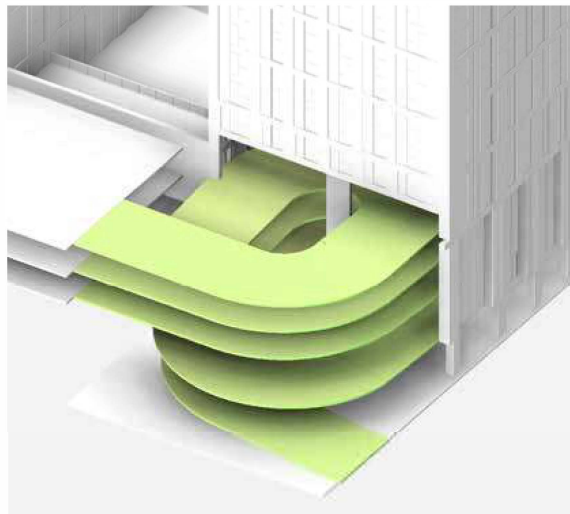
Basement Floor



- The removal of the front section of the Mall allows the new scheme to interface with the existing operation of the shopping centre **maintaining the servicing requirements of the existing tenants.**
- The main vehicular entrance is at basement level from the Inner Distribution Road.
- The car park will be accessed from a **new two way spiral ramp which is designed to integrate with the structure of Building A.**
- This new car park ramp will provide an **enhanced customer experience** with it being designed to the **latest best practice guidelines for car parks.**



New Car Park interface with Building A



Zoom in of the interface with Building A

- 01 Car park access
- 02 Servicing access to building A
- 03 Servicing access to the ground floor retail
- 04 Servicing access to building B
- 05 Servicing access to building C
- 06 Existing basement service area